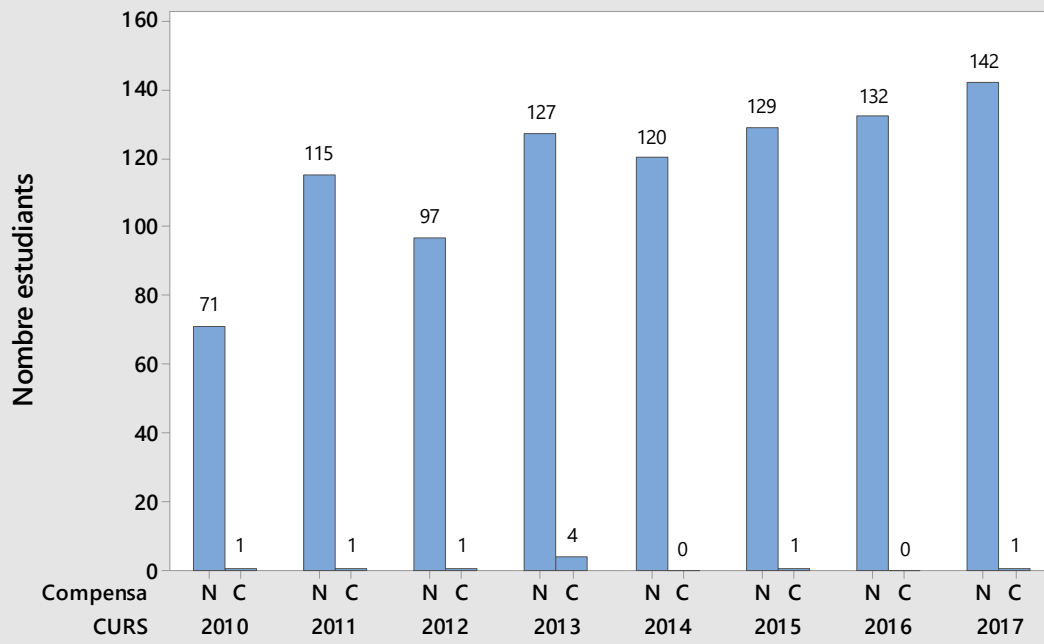
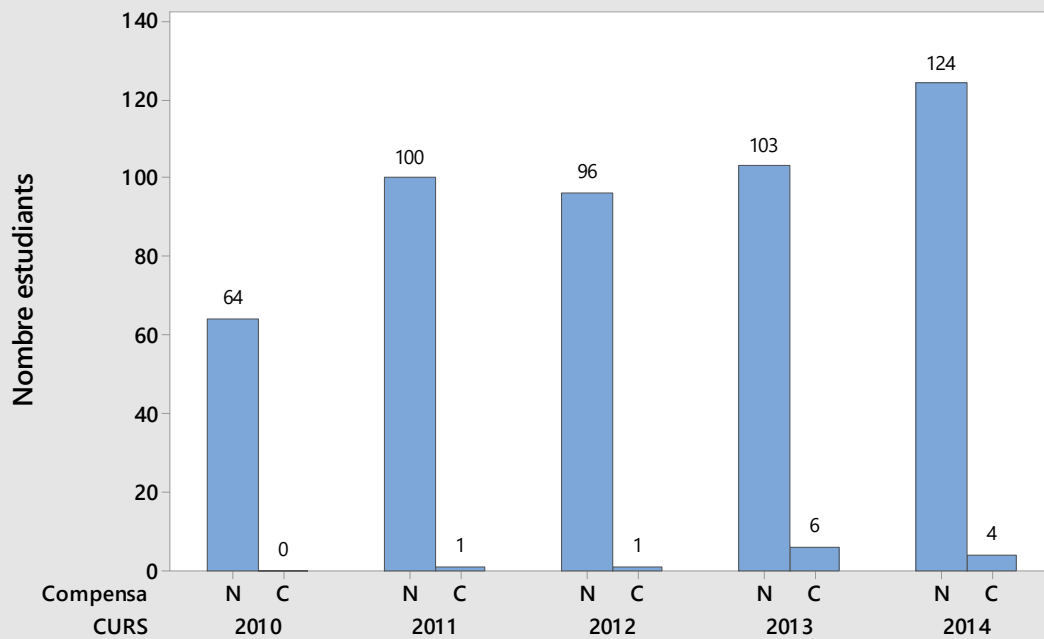
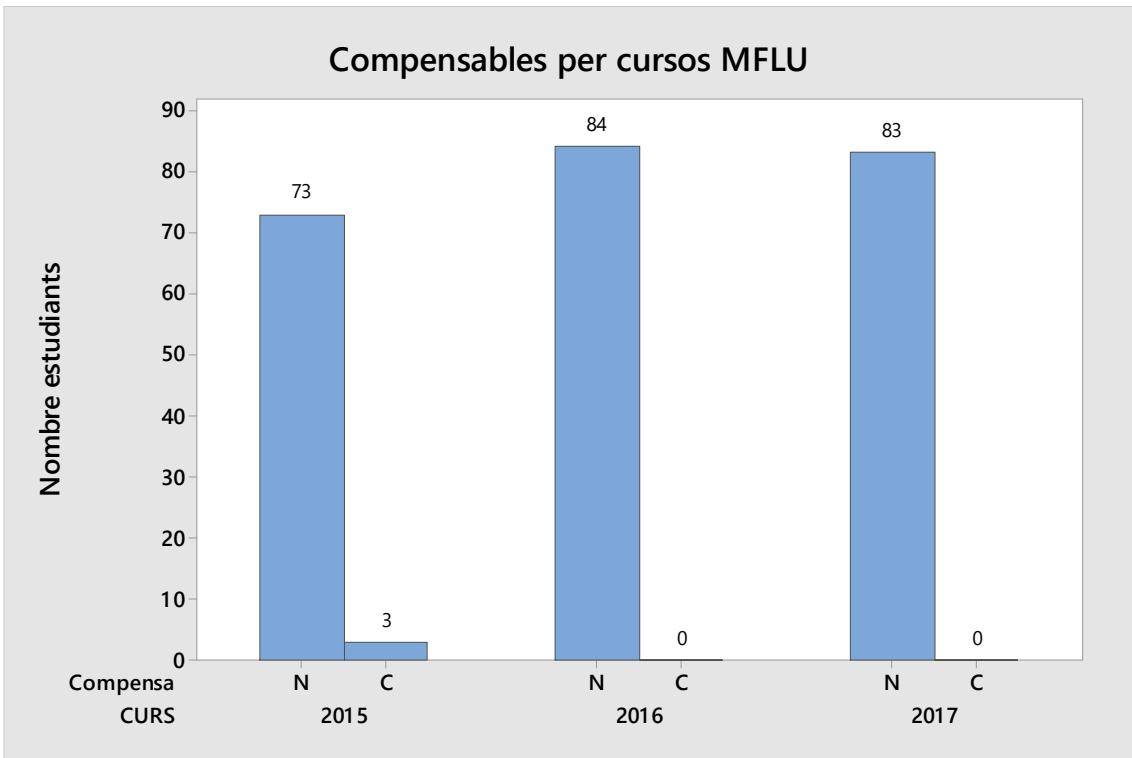
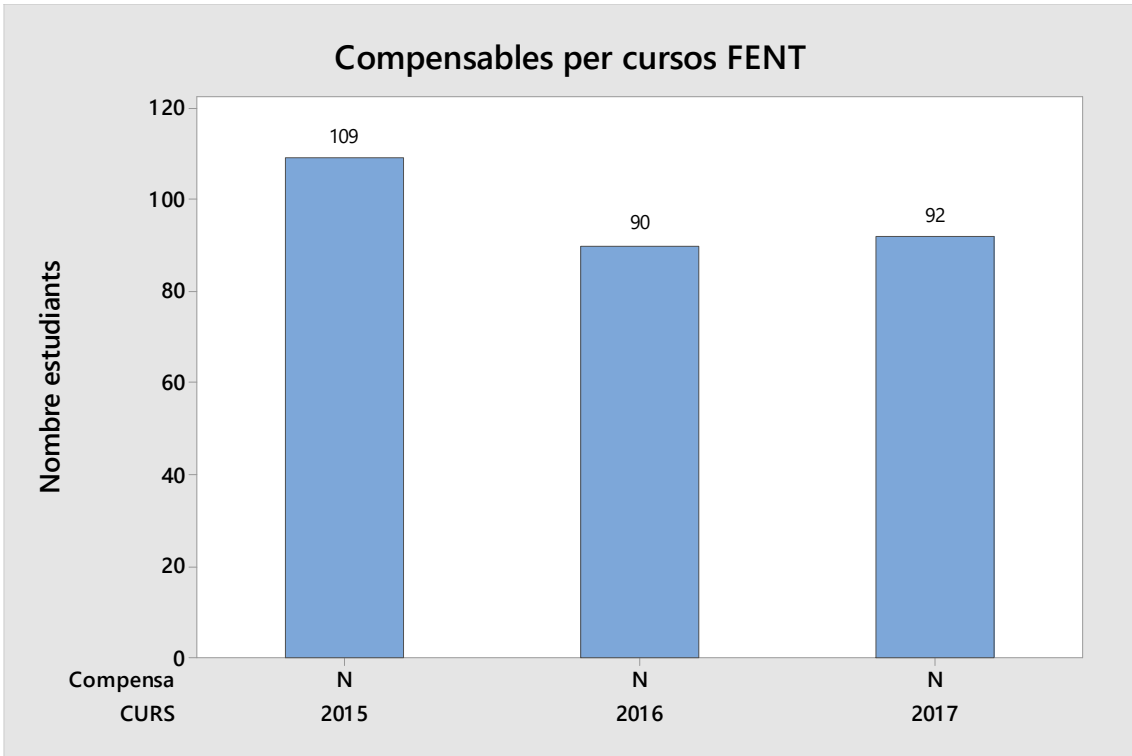


### Compensables per cursos ESTA

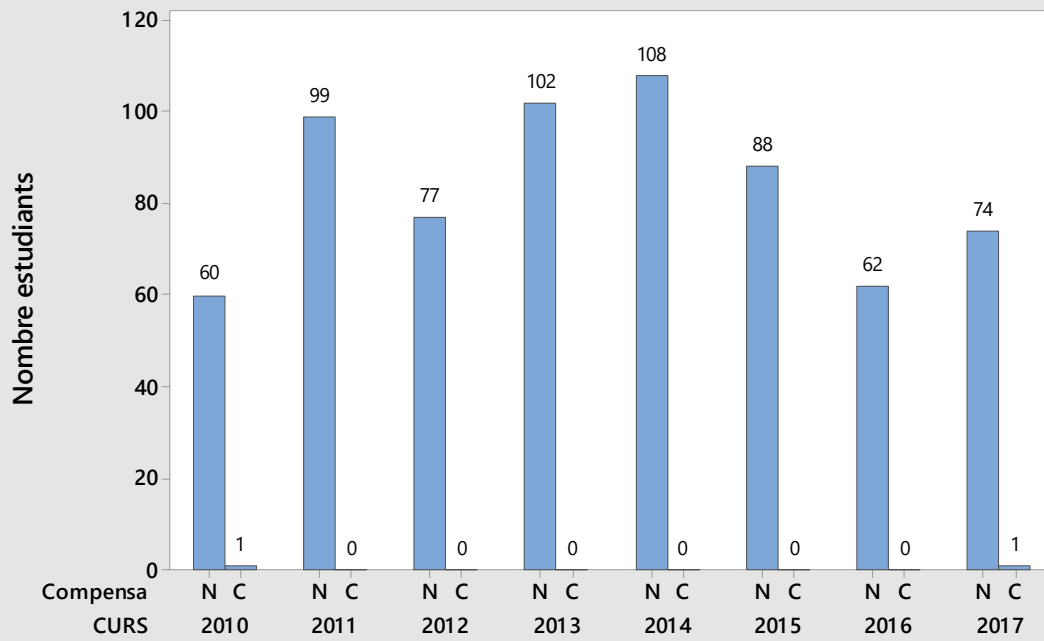


### Compensables per cursos ETMF

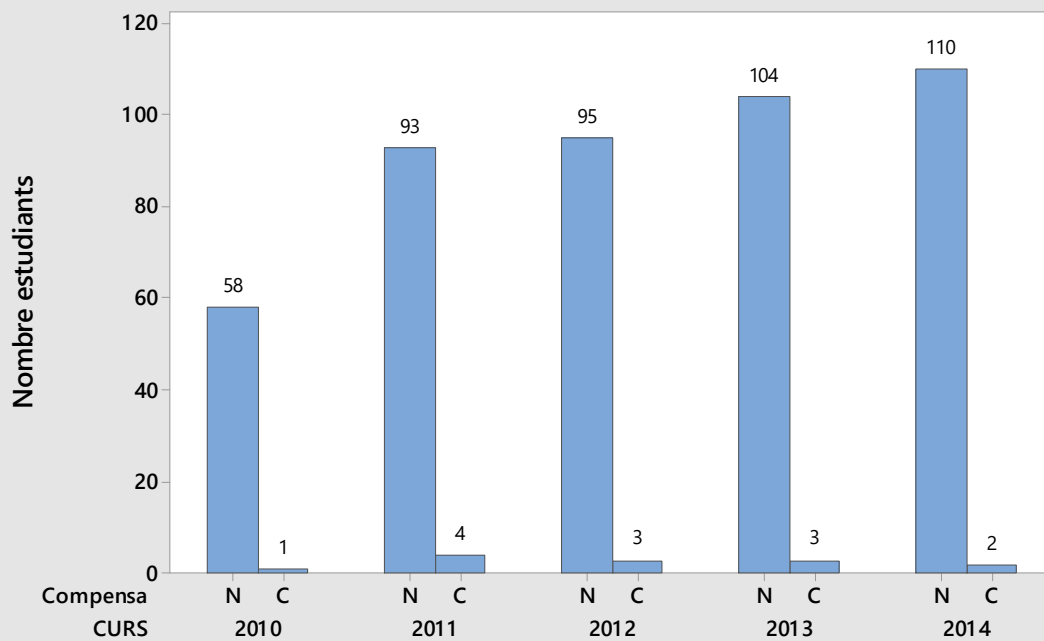


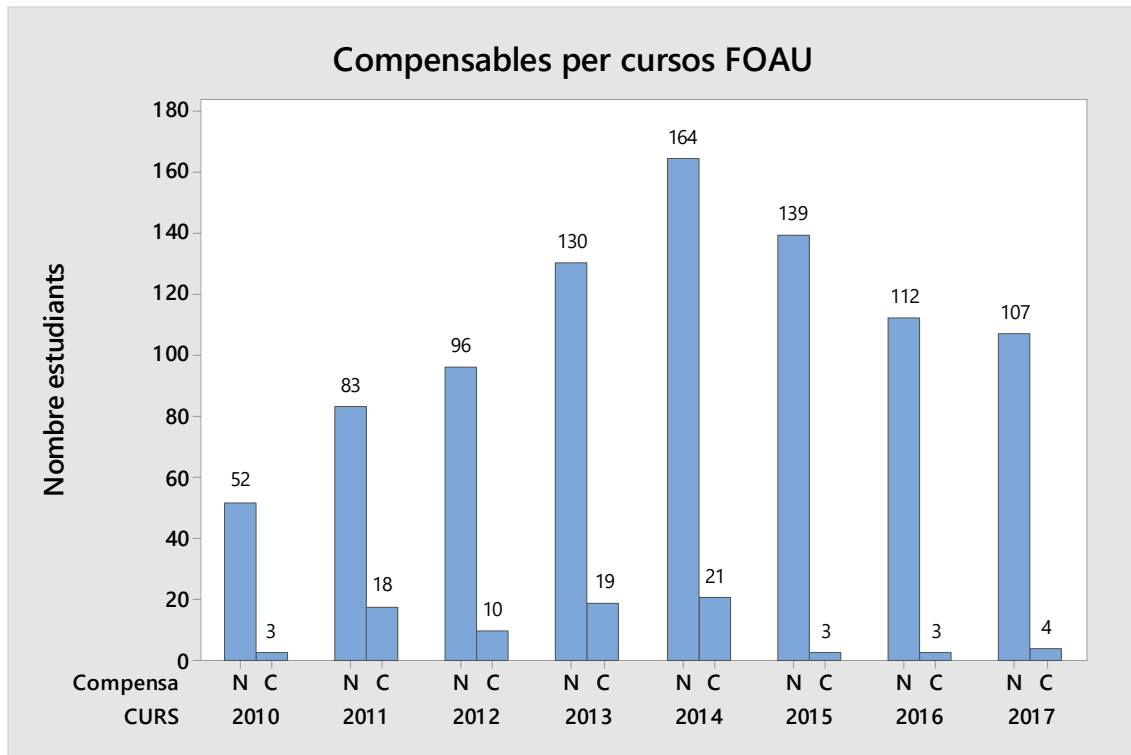


### Compensable per cursos EMPR



### Compensables per cursos SIEL

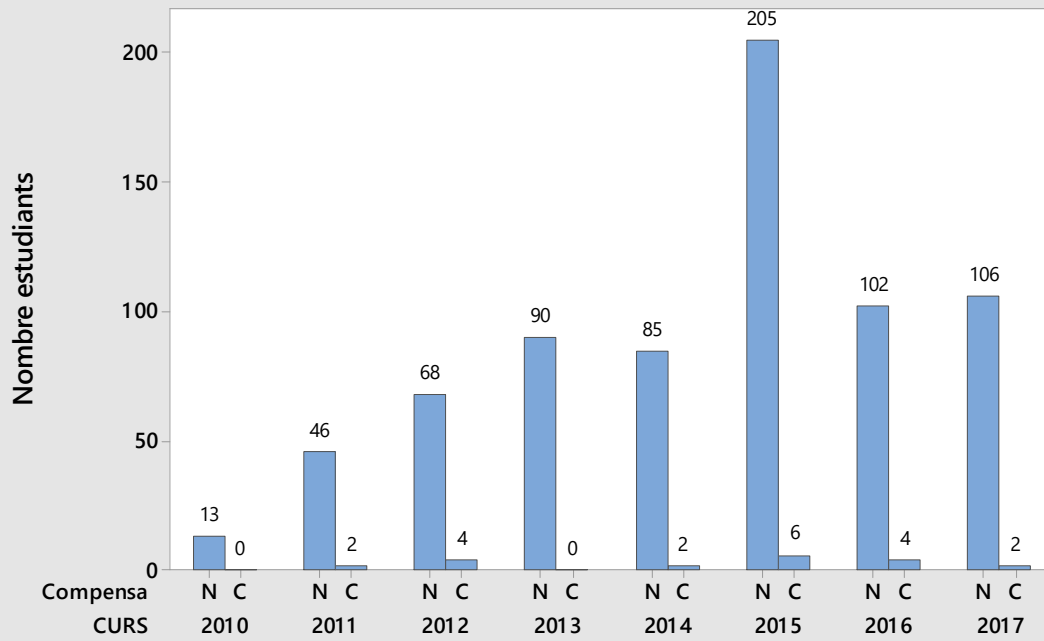




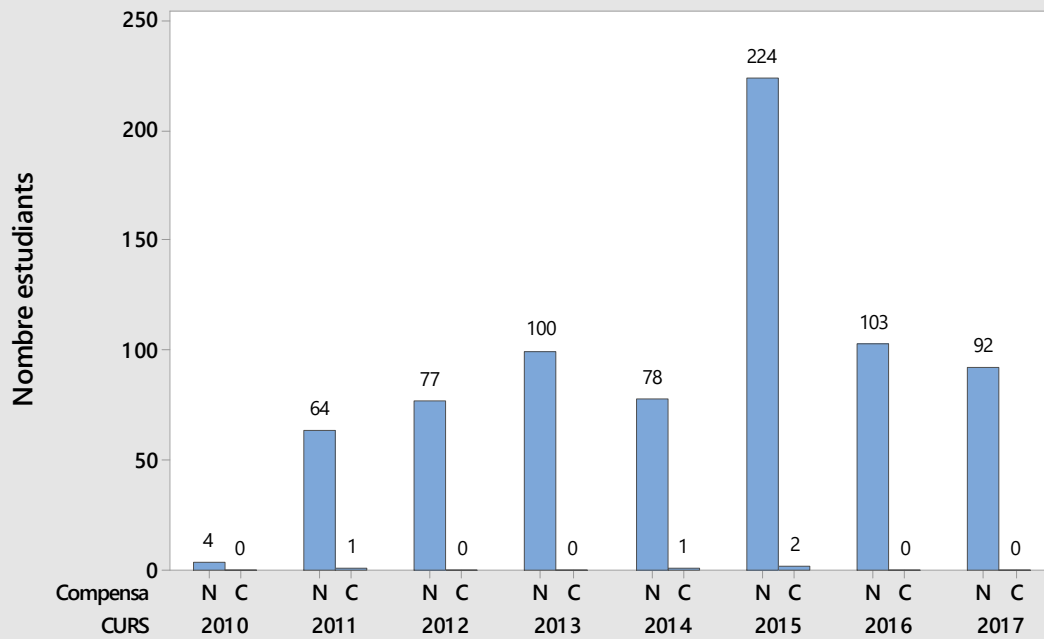
## Estadístics descriptius: FOAU

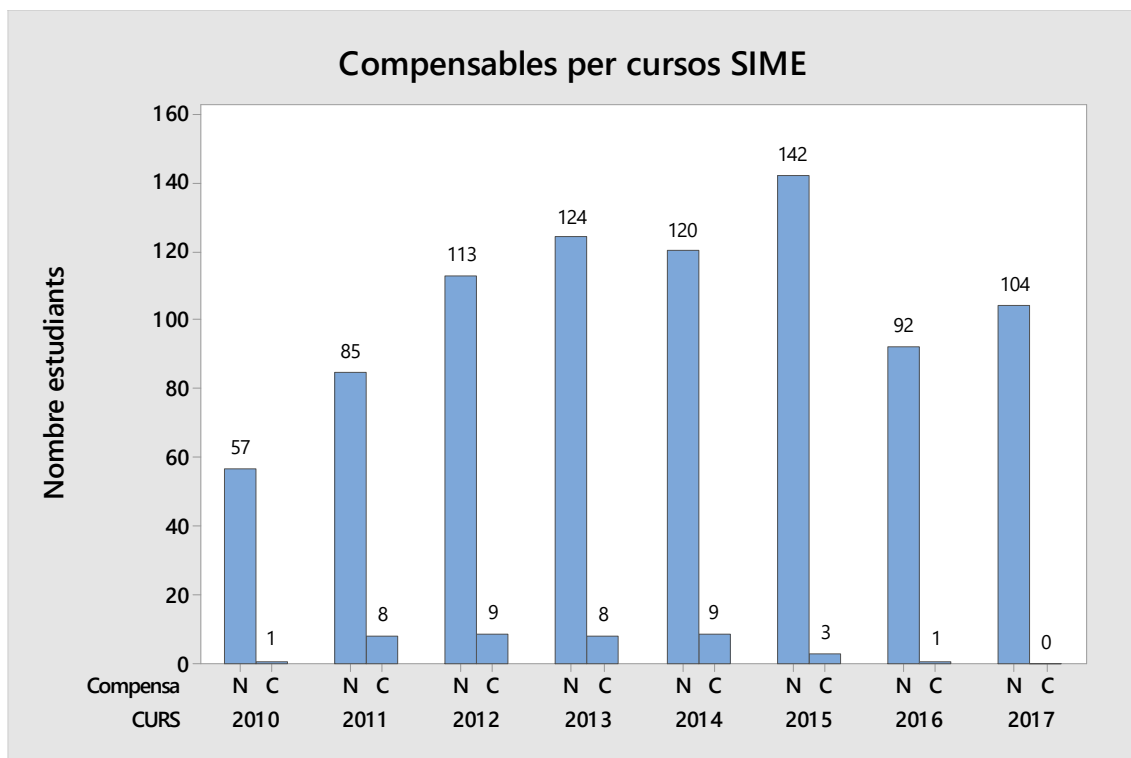
Variable	CURS	Conteo					
		total	Media	Desv.Est.	Mínimo	Mediana	Máximo
NOTA PROFESSOR	2010	55	3,268	1,859	0,000	3,500	7,000
	2011	101	4,437	1,835	0,000	5,000	8,000
	2012	106	3,143	2,488	0,000	3,300	8,500
	2013	149	3,168	2,186	0,000	3,350	8,000
	2014	185	4,384	1,744	0,000	4,600	9,000
	2015	142	3,932	2,227	0,000	4,150	8,200
	2016	115	4,005	2,007	0,000	4,200	8,200
	2017	111	3,979	2,175	0,000	4,400	9,000

### Compensables per cursos PRFA



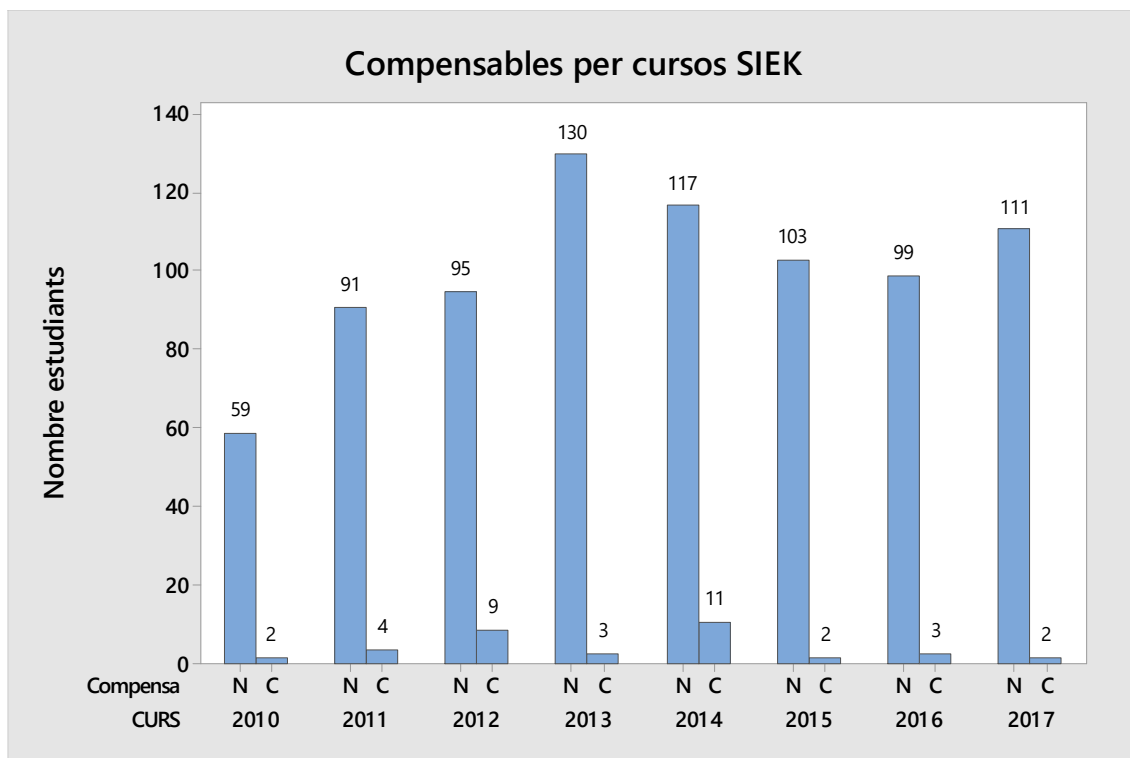
### Compensables per cursos RMA1





## Estadístics descriptius: SIME

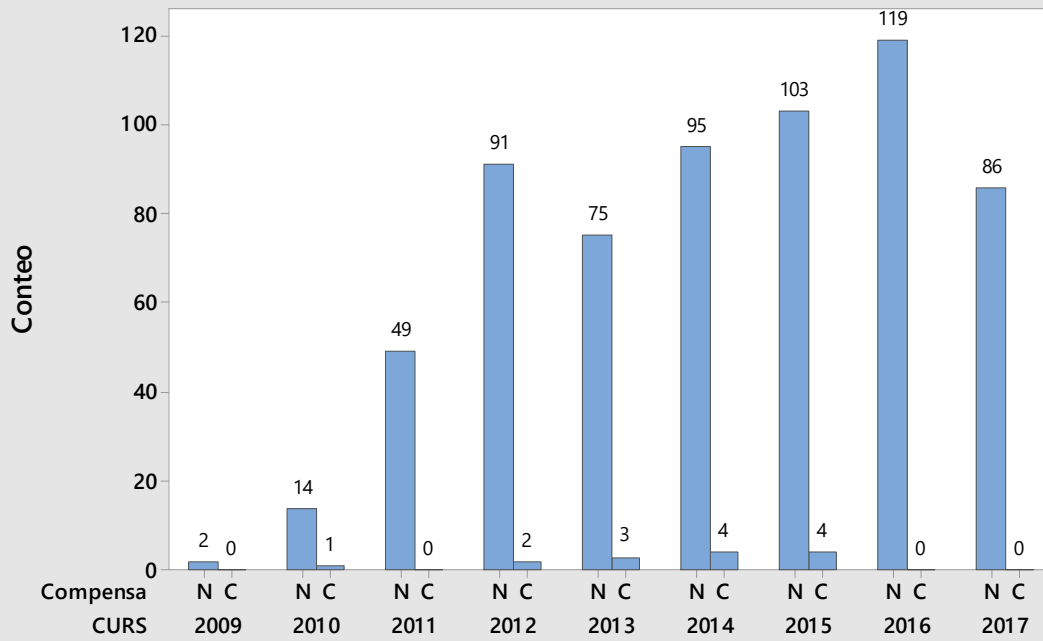
Variable	CURS	Conteo					
		total	Media	Desv.Est.	Mínimo	Mediana	Máximo
NOTA PROFESSOR	2010	58	5,538	1,642	0,000	5,700	8,600
	2011	93	4,145	1,880	0,000	4,500	8,200
	2012	122	4,527	2,050	0,000	4,700	8,900
	2013	132	4,822	1,710	0,000	5,050	9,000
	2014	129	4,472	1,860	0,000	4,600	8,400
	2015	145	5,035	1,847	0,000	5,100	9,700
	2016	93	4,652	1,749	0,000	5,000	9,300
	2017	104	4,835	2,210	0,000	5,050	9,600



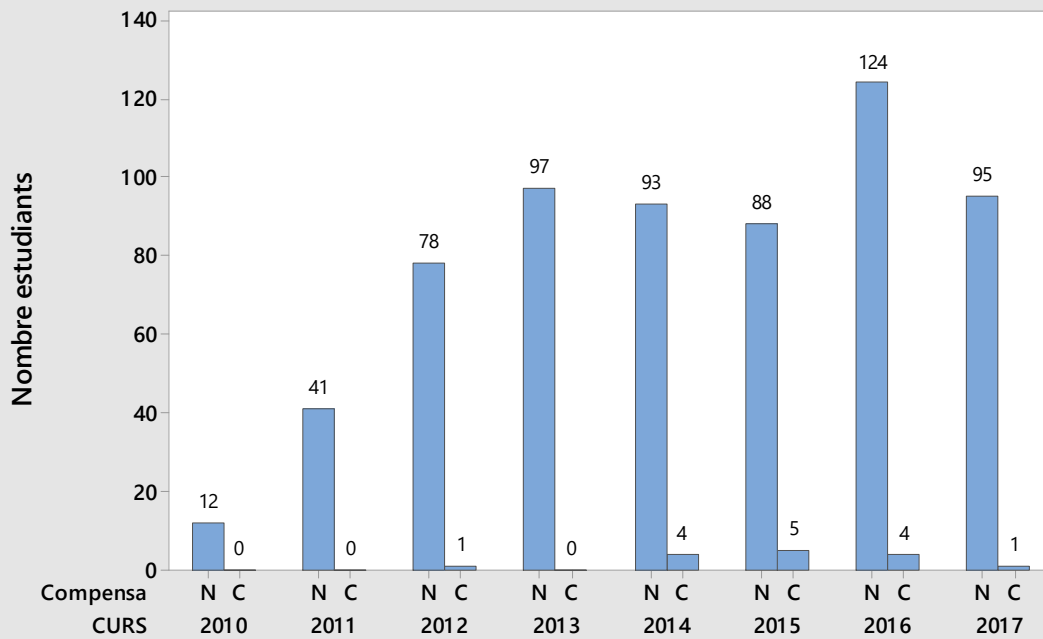
## Estadístics descriptius: SIEK

Variable	CURS	Conteo					
		total	Media	Desv.Est.	Mínimo	Mediana	Máximo
NOTA PROFESSOR	2010	61	3,960	2,536	0,000	5,000	8,000
	2011	95	4,966	1,523	0,000	5,200	8,600
	2012	104	4,030	2,188	0,000	4,500	8,000
	2013	133	5,290	2,001	0,000	5,600	9,200
	2014	128	4,804	2,221	0,000	5,000	10,000
	2015	105	4,321	2,074	0,000	5,000	8,500
	2016	102	3,539	2,048	0,000	3,400	9,000
	2017	113	4,383	2,203	0,000	5,000	9,500

### Compensables per cursos EXG2

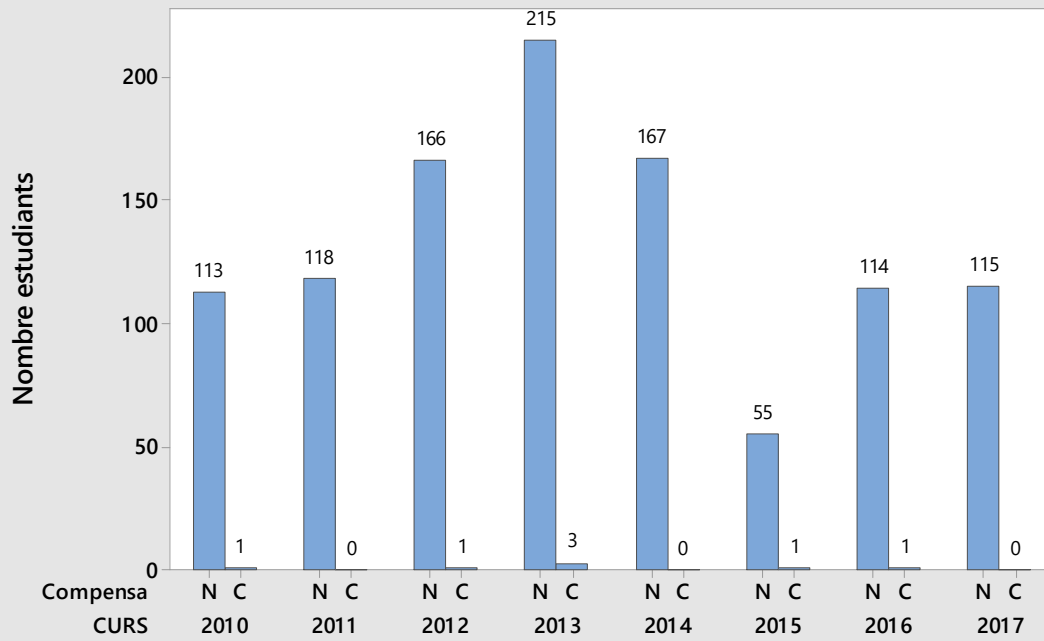


### Compensables per cursos MAES

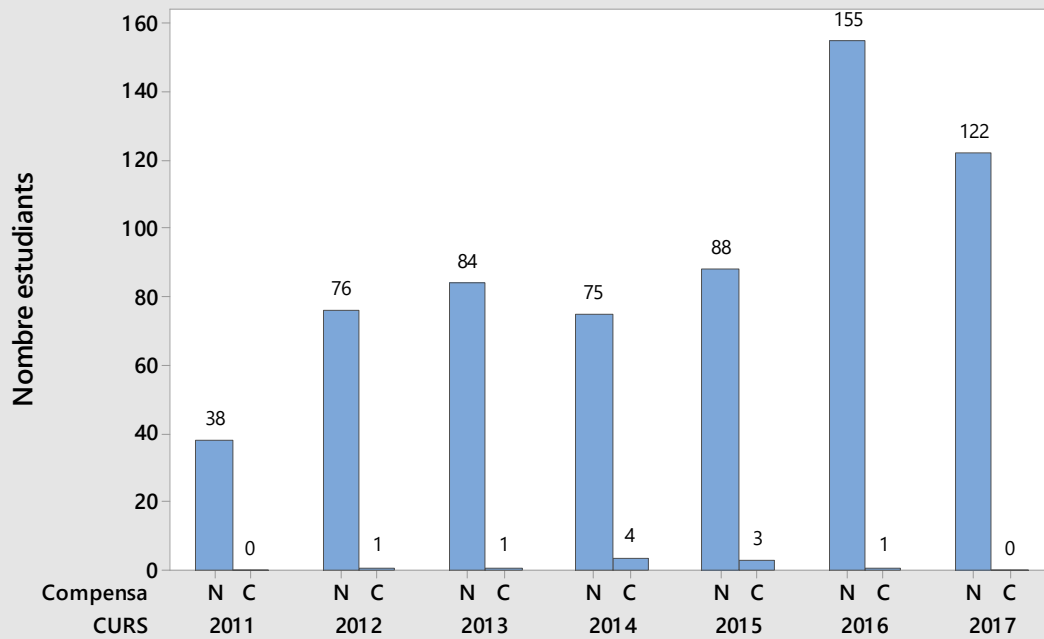


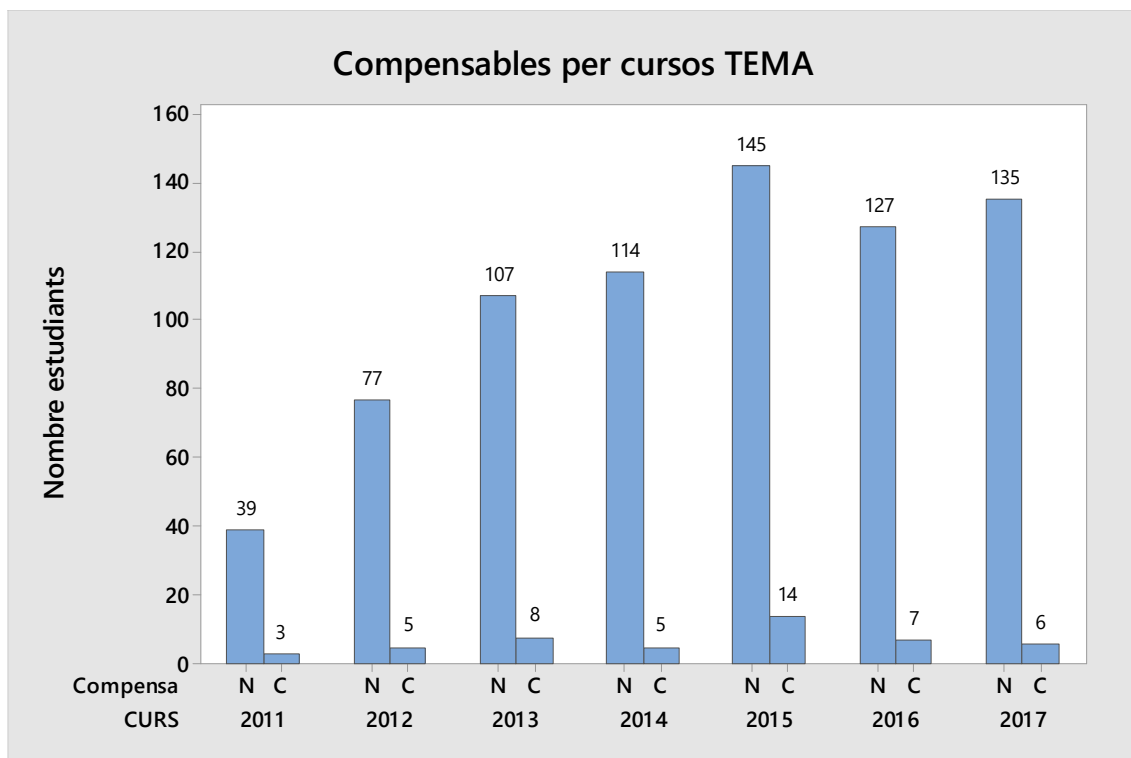


### Compensables per cursos ORPR



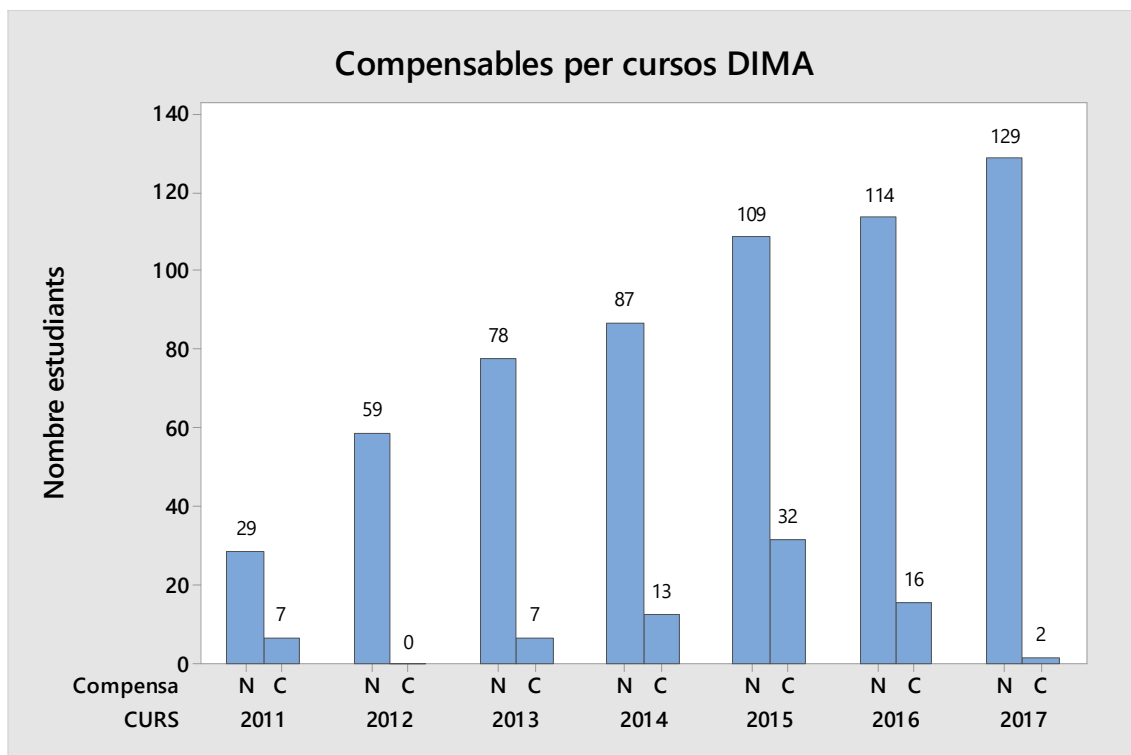
### Compensables per cursos RMA2





## Estadístics descriptius: TEMA

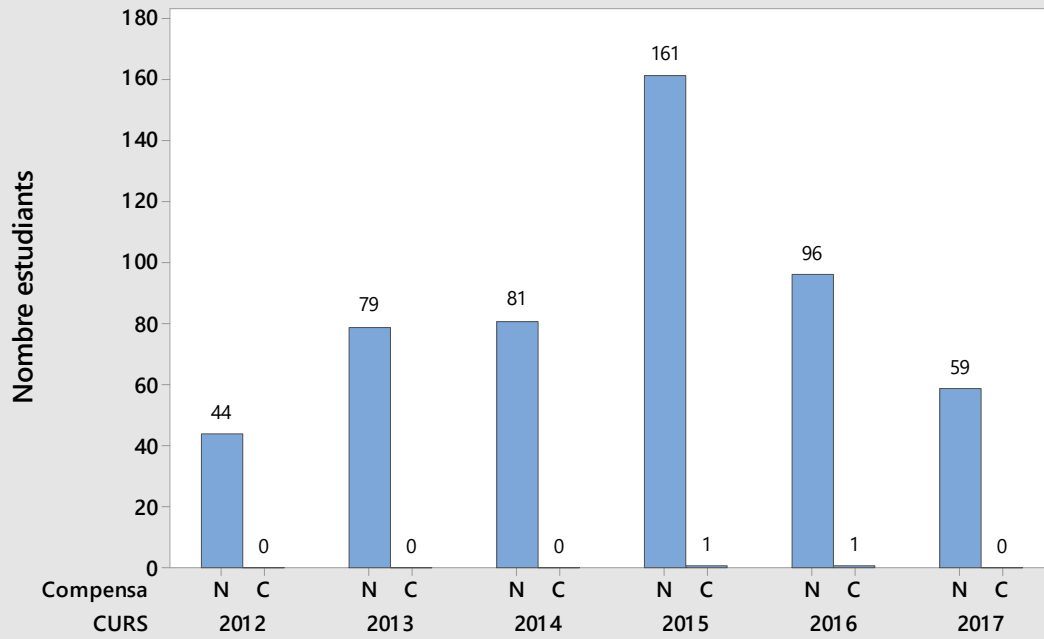
Variable	CURS	Conteo					
		total	Media	Desv.Est.	Mínimo	Mediana	Máximo
NOTA PROFESSOR	2011	42	4,130	2,803	0,000	4,800	9,000
	2012	82	3,746	2,038	0,000	3,550	8,300
	2013	115	4,228	2,047	0,000	5,000	8,900
	2014	119	3,979	1,915	0,000	4,300	9,300
	2015	159	4,573	2,081	0,000	5,100	9,300
	2016	134	3,278	2,446	0,000	3,400	9,400
	2017	141	3,240	2,348	0,000	3,500	8,100



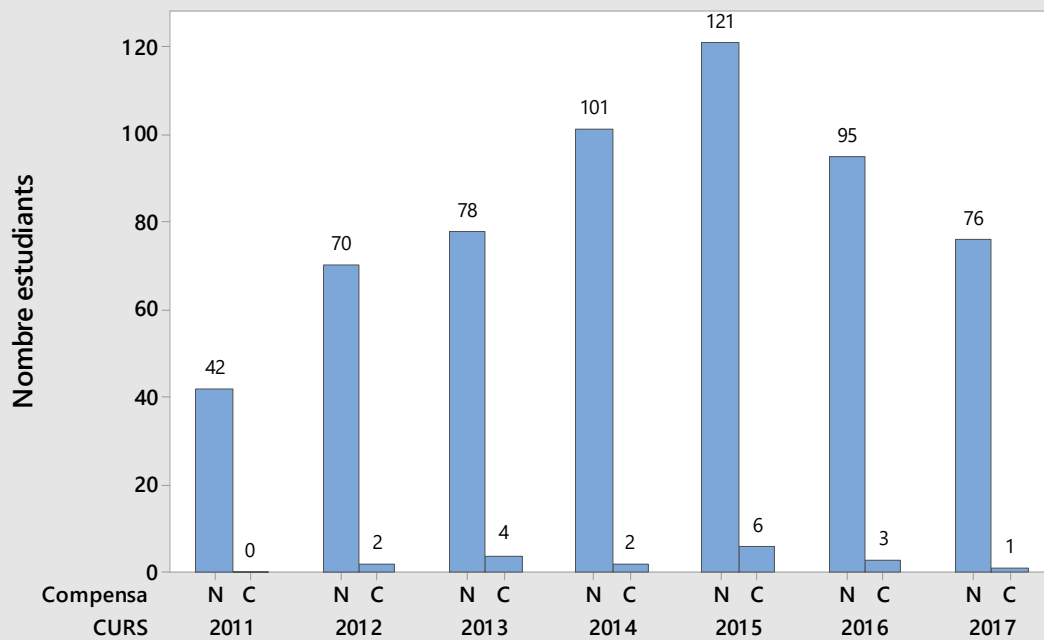
## Estadístics descriptius: DIMA

Variable	CURS	Conteo					
		total	Media	Desv.Est.	Mínimo	Mediana	Máximo
NOTA PROFESSOR	2011	36	4,714	1,458	1,100	5,000	7,400
	2012	59	5,019	1,485	0,200	5,000	7,700
	2013	85	4,260	2,056	0,000	4,100	9,300
	2014	100	4,862	1,902	0,000	5,100	9,500
	2015	141	3,885	1,910	0,000	4,200	8,200
	2016	130	3,417	2,016	0,000	3,500	8,400
	2017	131	3,664	1,989	0,000	4,100	8,800

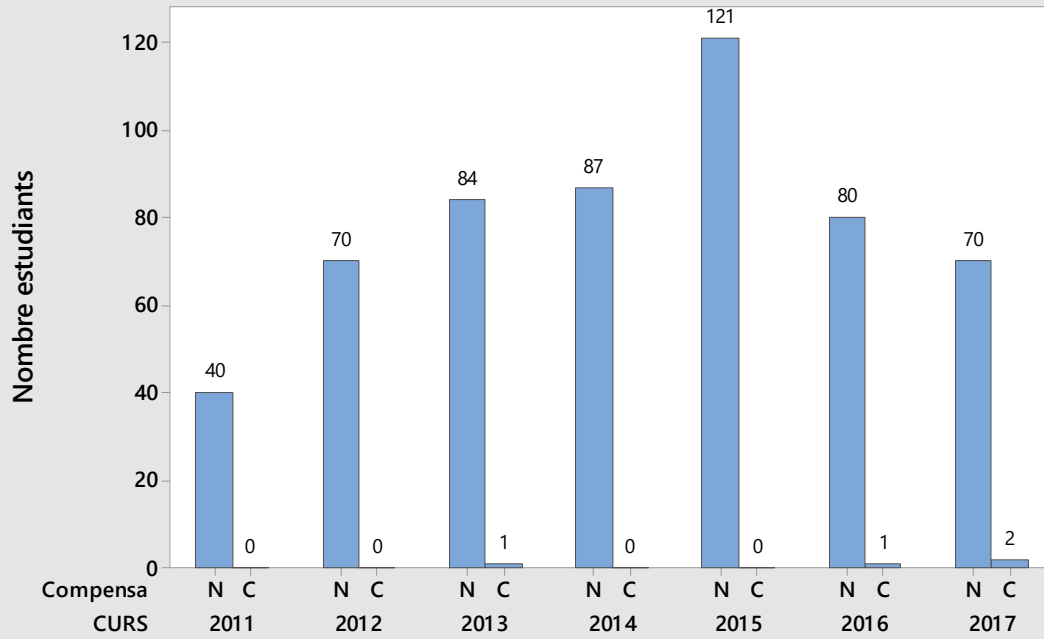
### Compensable per cursos DSAO



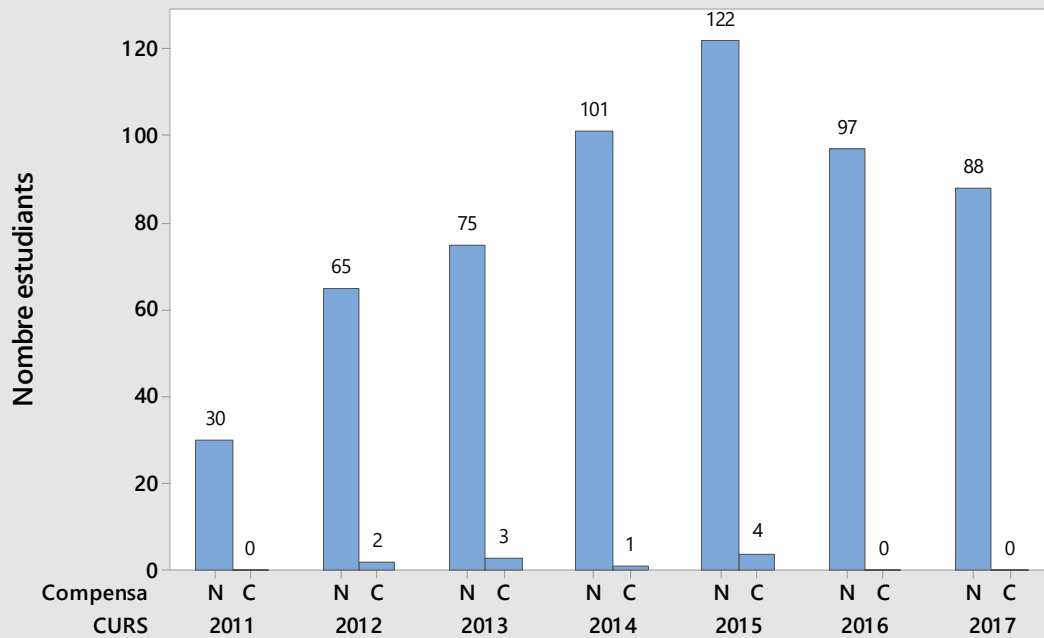
### Compensables per cursos ENFLU



### Compensable per cursos ETER



### Compensables per cursos ESCI



### Compensables per cursos GEPR

